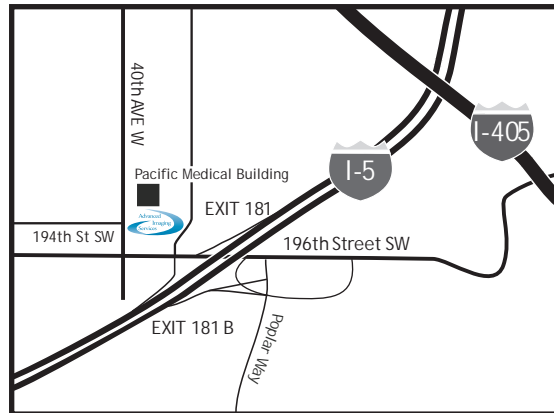




www.myadvaancedimaging.com

19401 40th Ave West • Suite 140
Lynnwood, WA 98036
Office: (425) 771-8161



FROM SEATTLE:

From I-5 North, Exit 181B (196th Street SW) and follow signs to 196th Street SW. Turn Left at 196th Street SW. Turn right at 40th Avenue W. Turn RIGHT at the 1st entrance into parking lot.

FROM NORTH OF LYNNWOOD:

From I-5 South, Exit 181 for WA-524 W (196th Street SW). Merge onto 196th Street SW traveling West. Turn Right 40th Avenue W. Turn RIGHT at the 1st entrance into parking lot.

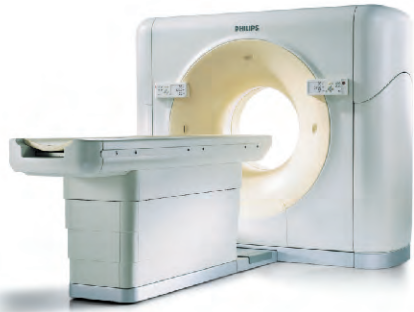
We are located at the far end of the building, with parking directly in front of the AIS entrance. These parking spaces have been specifically reserved for our patients.

Appointment	
Date	Time

Services Provided in Partnership With:



© 2010 Alliance HealthCare Services, Inc. All rights reserved.



Computed Tomography has revolutionized diagnostic medicine. This advanced X-ray technique allows your doctor and radiologist to view bones, organs, blood vessels and even your heart, in extraordinarily fine detail. This information helps doctors diagnose a wide variety of conditions earlier and faster than ever before.

In most cases you will be asked several questions prior to your CT scan. Be sure to inform your physician or the technologist if you have any allergies or believe you are pregnant.

This brochure attempts to answer general questions about CT. Should you have additional questions or concerns, please consult your doctor.

The health information contained herein is provided for educational purposes only and is not intended to be medical advice or to replace discussions with a health care professional. Copyright 2010 Alliance HealthCare Services, Inc. All rights reserved.



www.myadvaancedimaging.com

19401 40th Ave West • Suite 140
Lynnwood, WA 98036
Office: (425) 771-8161



What is Computed Tomography?



CT, which stands for Computed Tomography (sometimes referred to as a CAT scan), is a fast, painless diagnostic tool doctors can use to see inside the body. Physicians use the information they get from a CT scan to rule out or confirm the presence of certain abnormalities or diseases. If doctors do see something on your scan, that information can be extremely vital in determining the proper treatment options.

A CT scanner combines X-rays with advanced computer processing technology to create accurate detailed images of your internal structures and organs.

CT exams are quick and comfortable. You will be asked to lie still on a table as it gently moves you through the scanner.



Why Is CT Important?

CT scans allow doctors to see images of your internal organs and structures in great detail from a variety of angles. This gives your physicians critical information more quickly and, in many cases, more economically than they could achieve with other tests or invasive techniques. In those cases where surgery is recommended, the information from the CT scan helps the surgical team in their planning process.

Is CT Like An X-Ray?

Yes. CT uses X-rays in conjunction with advanced computer technology to generate very accurate and detailed images of your internal organs and structures. Your technologist will step into a control room to conduct the actual exam. You may notice a mechanical noise coming from the scanner. That is just the X-ray tube being activated and rotating around your body.

Will The CT Scan Hurt?

No. CT is a painless, non-invasive test that will not hurt at all. Your exam may require that a contrast agent be given intravenously that will make your blood vessels and tissues more visible. You will then be asked to lie perfectly still once the technologist has positioned you appropriately on the table. You may also be asked to hold your breath for a few seconds during the exam. Any movement may require the exam to be repeated.

How Long Will My CT Exam Take?

The length of your CT exam depends on which particular study, or studies, your doctor has ordered. Most exams are quick and painless, lasting just a few minutes. You may be asked to arrive at the facility 15 or 30 minutes prior to your scheduled exam time.

Do I Have To Do Anything Special To Prepare For My CT Scan?

How you prepare for your CT scan depends on what part of the body is being examined and the protocols used in your particular facility. In some cases the staff may ask you to change into a hospital gown for the exam. And, you may be asked not to eat or drink anything before your exam.

What Is A Contrast Agent?

A contrast agent is a safe liquid substance that makes certain tissues stand out more clearly against their surroundings, enabling the finest details to show up on the X-ray, improving diagnostic accuracy. You may be given the contrast agent intravenously or orally. In all cases the contrast agent will leave your body naturally within a few hours. If your exam does require a contrast agent, be sure to tell the technologist if you have any allergies especially to iodine or shellfish.

Will I Be Alone During The CT Exam?

During your CT exam you will be in contact with a technologist. Even when he or she is not in the CT room you will be able to communicate via intercom. The technologist will inform you when an exam is about to start, and when it is finished. Family members and/or friends are not permitted to stay with you in the CT room.

