

MRI CPT CODING GUIDE

Brain, Pituitary, IAC

70551 – w/o contrast
70552 – w/ contrast
70553 – w/ & w/o contrast

TMJ

70336 – TMJ

MRI's of the joint, upper or lower, often sports related. Sometimes coordinated with Fluro / IV Injected Arthogram.

Upper extremity, joint (Shoulder, Elbow, Wrist)

73221 – w/o contrast
73222 – w/ contrast
73223 – w/ & w/o contrast

MRI of the spines include the vertebra & spinal canal contents.

Cervical Spine

72141 – w/o contrast
72142 – w/ contrast
72156 – w/ & w/o contrast

Thoracic Spine

72146 – w/o contrast
72147 – w/ contrast
72157 – w/ & w/o contrast

Lumbar Spine

72148 – w/o contrast
72149 – w/ contrast
72158 – w/ & w/o contrast

Lower extremity, joint (Hip, knee, ankle)

73721 - w/o contrast
73722 - w/ contrast
73723 - w/ & w/o contrast

Orbits / eyes, optic nerves. Soft tissue neck masses, parotid gland tumors. Face & jaw masses or any non MRA head or neck not included in the brain tissue.

Orbit, Face & Neck

70540 – w/o contrast
70542 – w/ contrast
70543 – w/ & w/o contrast

Any chest, lung, rib or soft tissue mass not in the spine or the heart. Brachial Plexus also should fall under the chest.

Chest (clavicle)

71550 – w/o contrast
71551 – w/ contrast
71552 – w/ & w/o contrast

Upper extremity, other than joint (Humerus, Forearm, Fingers)

73218 – w/o contrast
73219 – w/ contrast
73220 – w/ & w/o contrast

Abdomen, MRCP

74181 – w/o contrast
74182 – w/ contrast
74183 – w/ & w/o contrast

Any & all abdominal contents/ organs, MRCP, pancreas, liver, spleen, kidneys, etc.

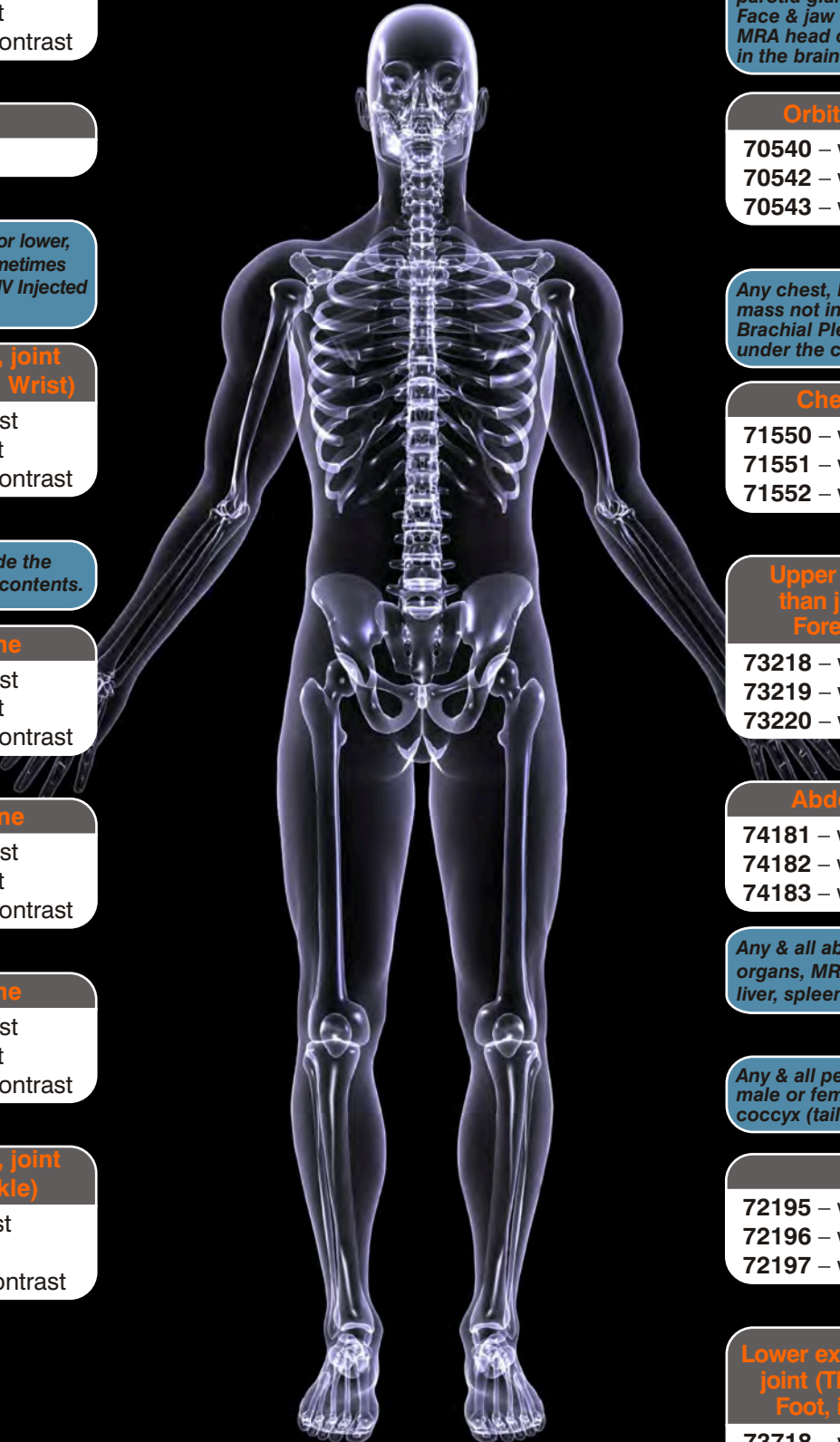
Any & all pelvic structures male or female Sacrum coccyx (tailbone).

Pelvis

72195 – w/o contrast
72196 – w/ contrast
72197 – w/ & w/o contrast

Lower extremity, other than joint (Thigh, Lower Leg, Foot, including Toes)

73718 – w/o contrast
73719 – w/ contrast
73720 – w/ & w/o contrast



MRA CPT CODING GUIDE

MRA's are for vascular imaging whether it be of the arteries or veins.
Can be with or without contrast.

70544 – MRA Head w/o contrast

70545 – MRA Head w/ contrast

70546 – MRA Head w and w/o contrast

70547 – MRA Neck w/o contrast

70548 – MRA Neck w/ contrast

70549 – MRA Neck w/ and w/o contrast

71555 – MRA Chest

75660 – MRA External Carotid Unilateral

72159 – MRA Spinal Canal

72198 – MRA Pelvis

73225 – MRA Upper Extremity

73725 – MRA Lower Extremity

74185 – MRA Abdomen

Any & all contents of the heart for anatomy of function

75552 – Myocardium



To schedule a patient
please call (425) 771-8161